

Safety rules – rules to minimize risk of infection v1.3 25th May, 2020

Explicit rules how to enter the cleanroom are given in the sheet below. You will also find this sheet posted in Bldg. 346 on our homepage and in LabManager. It will undergo revisions and updates and be adapted to the changing situation. It is therefore extremely important that you look at it each time you are entering the cleanroom.

It may not be very comfortable, but it has proven efficient to wear facemasks. Therefore, it is obligatory to wear face masks in the cleanroom and all the common research infrastructure labs at all times. This is standard procedure in many cleanrooms and especially effective in a situation when you are talking to another person. Please follow the instructions when and where to put on and discard the mask.

Our gowning area and the corridors leading to that area are not designed for keeping a distance of 2 meters. We have laid out rules for entering and using the gowning area, most explicit on the dirty side, where people spent most of the time. Please remember that the gowning area (on both sides) is a transit area and the main bottleneck regarding usage of the cleanroom. There try to minimize the time you stay in this area, be swift in your gowning procedure, do not talk with other people unless absolutely necessary while being in the gowning area.

Be considerate when you pass people in the corridor, step to the side, hold your breath for the moment passing.

Wait outside the gowning area until it is your turn and the waiting zone inside is vacant.

When using glasses, wipe them down with alcohol. Same goes for face-shields before and after use.

Should you have accidentally touched yourself in the face with gloved hands, clean your gloved hands with alcohol before you touch anything else and change gloves in the gowning area.

You will observe that we installed measures ensuring that the cleanroom suites are hung with a distance of approx. 20 cm. Please observe these arrangements and make sure that your cleanroom suit does not touch any other suit already hanging there.

Gowning being a major bottleneck we have decided that you should leave the cleanroom immediately through the nearest exit in case of alarm. Do so, also in case of mild evacuation (ventilation alarm). Proceed as if it would be an immediate evacuation (hard evacuation) and proceed (still in your cleanroom suit) immediately to our collection and gathering area in front of building 358. Stay there until a Nanolab staff member will give you further instruction. Remember to keep distance, also in this situation.

A small video, showing how to enter the cleanroom, explaining the new gowning rules is available in LabManager and on our homepage.

We are trying hard to provide a safe environment that allows as many users as possible to their work and conduct their research. Please help us by being patient, considerate and understanding and thereby contribute to an environment where we all can achieve what we set out to achieve despite this difficult situation.

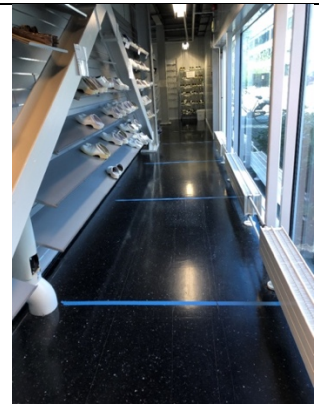
Rules for entering the cleanroom

In case of an alarm, both hard and mild evacuation, leave the cleanroom immediately through the nearest emergency exit, go to building 358, and wait for DTU Nanolab staff to arrive.

Clean your hands thoroughly before entering the corridor to the cleanroom

Before entering the gowning area, wait in the corridor in front of the entrance door.

Observe the markings on the floor.



Make sure no one else is waiting inside the gowning area in the waiting zone before entering.



Immediately after entering gowning area: disinfect your hands, and then put on a facemask.

Only one person allowed in the waiting zone, waiting for cleanroom access inside gowning.



Observe the markings on the floor for going in/going out of the cleanroom.



Only one person per marked field.

The transit zone is where the suits and boots are placed, passing through only.



At all time, KEEP DISTANCE.

When leaving, do not take off your gloves and face mask until you are at the washroom.



**Dispose your gloves and face mask.
Afterwards, wash your hands thoroughly
using soap.**

